

VMI HYBRID™

User's Manual

Covers setup, getting to know your machine, alerts & warnings, repairing an optical disc, safety & cleaning, and FAQs



VenMill Industries, Inc
670 Douglas Street
Uxbridge, MA 01569 USA
USA 800-928-0090
No. Am. 866-864-0210
Intl. 508-278-0091
Fax 508-278-0005
www.venmill.com

THANK YOU

For purchasing the VMI HYBRID™

This unit is intended to clean/repair the following discs: Blu-Ray, CD-ROMs, Music CDs, Data CDs, DVDs, HD-DVDs, Computer Discs, Game Discs, Books on disc, all recordable CDs and DVDs, and double-sided discs.

SAVE ALL PACKING MATERIALS. FAILURE TO USE PACKAGING DESIGNED FOR THIS UNIT MAY CAUSE DAMAGE TO THE UNIT AND WILL VOID WARRANTY. FOR MORE INFO CONTACT SUPPORT@VENMILL.COM.

© 2012 VenMill Industries, Inc. All rights reserved. Under the copyright laws, this manual may not be copied, in whole or in part, without the written consent of VenMill.

Every effort has been made to ensure that the information in this manual is accurate. VenMill is not responsible for printing or clerical errors.

Names and designs are trademarks of VenMill Industries, Inc. Artwork and Design © 2012 VenMill Industries, Inc. All Rights Reserved.

The maximum amount of repairs per bottle may vary based on cleaning cycle usage. See www.venmill.com for more information.

CAUTION: Units and consumables are designed for use in specific regions. Your warranty will be voided if you purchase the equipment and/or consumables outside of your designated region. Purchase only through Authorized Distributors found on our website at www.venmill.com. If uncertain, please contact sales@venmill.com.

READ BEFORE OPERATING EQUIPMENT

SECTION 1

Unpacking	1
-----------------	---

SECTION 2

Getting to Know Your Unit	2
---------------------------------	---

SECTION 3

Initial Setup	3
---------------------	---

SECTION 4

Modes of Operation	6
--------------------------	---

SECTION 5

Quick Start	11
-------------------	----

SECTION 6

Standard Maintenance	13
----------------------------	----

SECTION 7

Replacing Consumables	14
Buffing Pads	14
Water Bottle	15
Buffing Solution	16
Center Hub	17
Consumable Counter Chip (C-H Chip)	18

SECTION 8

Repacking	19
-----------------	----

SECTION 9

VMI HYBRID™ FAQs	21
------------------------	----

SECTION 10

Specifications	23
----------------------	----

SAVE ALL PACKING MATERIALS. FAILURE TO USE PACKAGING DESIGNED FOR THIS UNIT WILL CAUSE DAMAGE TO THE UNIT AND WILL VOID WARRANTY.

Parts that need to be saved are as follows:

VMI Hybrid Outer Shipping Box | VMI Hybrid Inner Shipping Box | Top KorrVu Holder | Bottom KorrVu Holder | Protective Plastic Bag | Locking Cap for Buffing Solution Bottle *There is a charge plus shipping for packing materials, if they are discarded.*

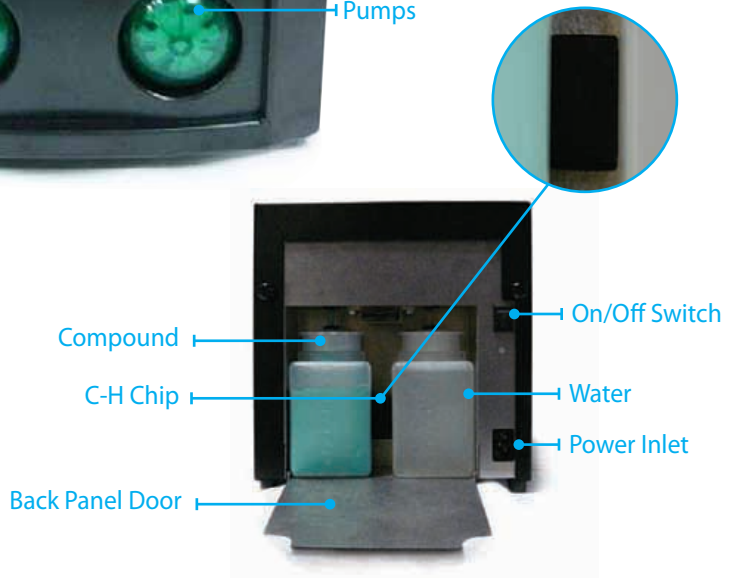
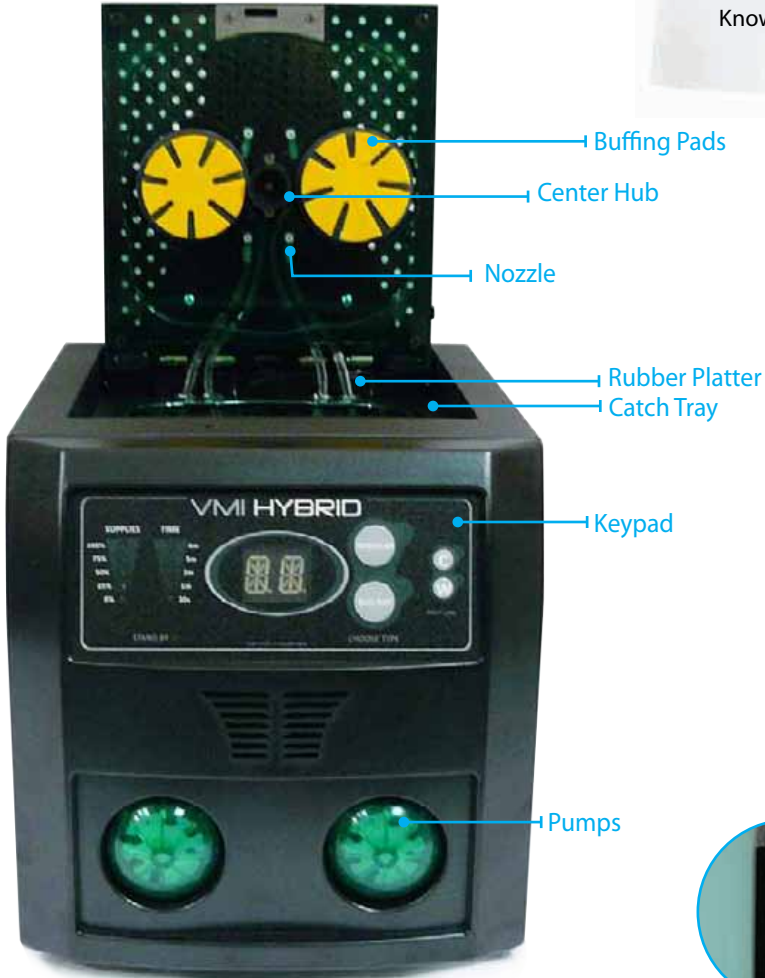
UNPACKING:

1. Open the Outer and Inner Shipping Boxes.
2. Remove the Support Documents / Accessories package (included inside: Power Cord, Warranty Information, and User Manual) and the Consumable package (included inside: 6 Sets of Buffing Pads, 2 Center Hubs, 2 Bottles of Buffing Solutions, 2 Nozzle Plugs, and 1 C-H Chip).
3. Pull out the first piece of KorrVu packaging.
4. Remove the VMI Hybrid from the Inner shipping box.
5. Take the VMI Hybrid out of the plastic bag.
6. Plug in the power cord to the power inlet on the back of the machine. Then proceed to take the other end of the power cord and plug it into a wall outlet
7. On the back side of the machine, turn the ON/OFF switch to the ON position.
8. The machine will power ON and the Top Cover will automatically open.
9. Proceed to the "Initial Setup" section of the User Manual.



SECTION 2

Getting to Know Your Unit



Initial Setup

For shipping purposes - the bottles of Buffing Solution, the C-H Chip, the Center Hubs, and the Buffing Pads have been separated from the unit. Please find these items stored within the packing material.

Buffing Solution Bottles

The bottles of Buffing Solution that have been shipped with your VMI Hybrid machine are pre-filled with enough solution to last 250 minutes, 500 minutes in total. These bottles have been sealed to ensure that no solution will escape. **NOTE: BEFORE INSTALLATION IT IS ESSENTIAL TO SHAKE THE BUFFING SOLUTION BOTTLE WELL!** Once mixed, remove the safety seal from the bottle by unscrewing the bottle cap. Once safety seal has been removed, reinstall bottle cap, and then proceed to feed the designated Buffing Solution tubing through the cap. **NOTE: ONLY ONE OF THE TWO BOTTLES OF BUFFING SOLUTION CONTAINS A CAP WITH AN OPENING FOR THE TUBING. THIS CAP MUST BE SAVED FOR REUSE! CAUTION: MAKE SURE THE TUBING REACHES THE BOTTOM OF THE BOTTLE AND MAKE SURE NOT TO PINCH THE TUBING!**

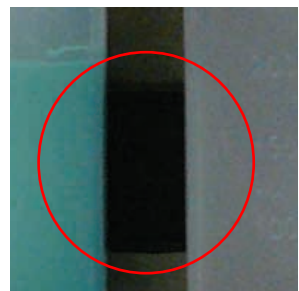
REMINDER: PLEASE KEEP THE SHIPPING CAP & SAFETY SEAL! SHOULD THE MACHINE NEED TO COME IN FOR SERVICING, THE BUFFING SOLUTION BOTTLE MUST BE REMOVED. TO ENSURE THAT THE COMPOUND DOES NOT CURE, YOU WILL NEED TO MAKE SURE THAT THE BOTTLE IS SEALED AND CAPPED.

Water Bottle

The bottle for Water that has been shipped within your VMI Hybrid machine must be filled with any potable water. This bottle is rated for 250mL or 8oz of water. Please fill as shown in the corresponding picture. Once filled, proceed to feed the designated Water tubing through the cap. **CAUTION: MAKE SURE THE TUBING REACHES THE BOTTOM OF THE BOTTLE AND MAKE SURE NOT TO PINCH THE TUBING!**

Consumable Counter Chip (C-H Chip)

The VMI Hybrid unit comes with a Consumable Counter Chip which is good for 500 minutes of machine use. This chip must be installed in the back of the unit, in between the Buffing Solution and the



Water bottles in order to operate the unit. The amount of usage on this chip will be displayed on the front User Keypad. The "Supplies - Fuel Gauge" located on the front User Keypad will decrease the amount of supplies left on the C-H Chip as you continue to use the machine. Once this chip is depleted, the machine will notify you and no more cycles will be allowed, until a new C-H Chip is installed. NOTE: THE VMI HYBRID WILL NOT OPERATE WITHOUT A C-H CHIP.

Power Cord

The VMI Hybrid unit comes with a power cord based on the region that the machine is designated for. This power cord needs to be installed into the Power Inlet located on back of the unit. Then proceed to take the other end of the power cord and plug it into a wall outlet.

Prepping Consumables

Before any discs can be run in the VMI Hybrid it is essential to prep the Buffing Solution and the Water lines. WARNING: FAILURE TO PREP THE BUFFING SOLUTION & WATER LINES WILL CAUSE DAMAGE TO BOTH THE DISC AND THE PADS! The following is the step by step sequence for prepping the consumables:

1. Turn on power to the unit by pressing the ON/OFF switch, located on the back of the unit, to the ON position.
2. Upon powering up, the TOP COVER will automatically open.
3. Have a small container or receptacle ready in order to catch the Buffing Solution and the Water that will come from the Tube Nozzles during the prep process.
4. Located on the front of the VMI Hybrid is the User Keypad. On the User Keypad, located on the right hand side, are two buttons labeled "C" for Buffing Solution and "W" for Water. Located below these two buttons, is the label entitled "Prep Line".
5. To activate the prepping process, simply press either the "C" or the "W" button. Note: Both lines can be prepped at the same time, but it is recommended that one line

be prepped at a time. Once the Buffing Solution and the Water comes out of the designated Tube Nozzles and there is no more air left in the line, press either the "C" button to stop the Buffing Solution flow or press the "W" button to stop the water flow.



Installing Center Hub

The VMI Hybrid unit comes with two Center Hubs. These hubs protect the inside diameter of the disc, from collecting any residue, during the repair process. The Center Hub will need to be replaced after 250 minutes of use. This will occur at the same time that the Buffing Solution bottle needs to be replaced. The Center Hub should be installed after the Buffing Solution and the Water lines have been prepped. Locate the metal Hex shaped post

between the two Buffing Pad Holders. Take one of the Center Hubs and line up the Hex shaped opening on the hub to the Hex shaped post. Push the Center Hub in, as far as it can go. Spin the Center Hub by hand to make sure the hub is centered. If needed, make the proper adjustment.



Installing Buffing Pads

The VMI Hybrid unit comes with six sets of Buffing Pads, which are good for a total of 500 minutes, 84 minutes per set. These Buffing Pads are not pre installed! *Note: Installation of these Buffing Pads are recommended to be done after the prepping of the Buffing Solution and Water lines. This will prevent any undue Buffing Solution or Water from contaminating the buffing pads.* Install each buffing pad onto the buffing pad holder. Each Buffing Pad has been marked on the back side with an "L" or an "R", to indicate which Buffing Pad should go on which Buffing Pad holder. NOTE: THE "R" (RIGHT) BUFFING PAD IS LARGER IN SIZE THAN THE "L" (LEFT) BUFFING PAD. Make sure that the Buffing Pad is centered and fully seated on the Buffing Pad Holder. After every 84 minutes of machine use, the VMI Hybrid will inform the Operator to replace the Buffing Pads.

CAUTION: IT IS ESSENTIAL TO KEEP THE "TOP COVER" IN THE OPEN POSITION WHEN THE MACHINE IS IN THE "STAND BY" MODE & WHEN THE MACHINE IS NOT IN USE! THIS WILL ENSURE THAT THE BUFFING PADS WILL NOT BECOME FLAT.

Your VMI Hybrid unit is now ready to be used!

FAILURE TO USE CONSUMABLES DESIGNED FOR THIS UNIT WILL CAUSE DAMAGE TO BOTH UNIT AND DISC THEREBY VOIDING YOUR WARRANTY. FOR AUTHORIZED DISTRIBUTORS VISIT WWW.VENMILL.COM.

Modes of Operation



Regular

This option encompasses any of the following types of discs: CD-ROMs, Music CDs, Data CDs, DVDs, HD-DVDs, Computer Discs, Game Discs, Books on Disc, all recordable CDs and DVDs, & double-sided discs.

Press the “Regular” button located on the User Keypad to activate this operation. A Solid Green LED will appear next to this option. The User Keypad will then prompt the User to select

a length of time. The User will have an option of time ranging from 30 seconds to 4 minutes, depending on the severity of damage on the disc. When the User Keypad prompts the Operator to select a repair time, all the available time for this option will flash on the “Time – Fuel Gauge”. To select the desired time, press the “Regular” button to the desired time option. When this is done the lights will stop flashing and only a solid light will appear next to the time that has been selected. Next, close the Top Cover, and the machine will start automatically.



Blu-Ray

This option encompasses any of the following types of discs: Blu-Ray and PS3 discs.

Press the “Blu-Ray” button located on the User Keypad to activate this operation. A Solid Green LED will appear next to this option. The User Keypad will then prompt the User to select a length of time. The User will have an option of time ranging from 1 minute to 4 minutes, depending on the severity of damage on the disc. When the

User Keypad prompts the Operator to select a repair time, all the available time for this option will flash on the “Time – Fuel Gauge”. To select the desired time, press the “Blu-Ray” button to the desired time option. When this is done the lights will stop flashing and only a solid light will appear next to the time that has been selected. Next, close the Top Cover, and the machine will start automatically.

Emergency Stop

A situation may present itself in which an Operator may desire to stop a cycle prematurely. At any time during the cycle, the User may press any button on the User Keypad to stop the cycle. Once the button is pressed, the cycle will stop, and the Top Cover will open automatically. The Main Screen will then display the “ER” error message indicating that the Emergency Stop function has been successfully accomplished. Once the unit has reset to the Main Function, the “ER” error message will disappear and the User can now continue with operation.



Clean Catch Tray

During every cycle, Buffing Solution and Water is applied to the disc's surface. This collection of residue will drain down into the Catch Tray. This residue must be cleaned out periodically. For this reason the VMI Hybrid has been designed to notify the Operator to remove and clean the Catch Tray. After 50 minutes of machine operation, the Main Screen on the User Keypad will display the "C3" message, indicating that the Catch Tray must be cleaned out.

Once the Catch Tray has been cleaned, the Operator will need to press any button on the User Keypad, to inform the unit that the cleaning has been performed. At this point the "C3" message will disappear. Upon completion, the machine will reset back to the Main Function Mode, and the User can now continue with operation.

WARNING: FAILURE TO CLEAN THE CATCH TRAY WILL RESULT IN AN OVERFLOW OF RESIDUE AND WILL CAUSE DAMAGE TO THE MACHINE!



Add Water

During every cycle, Water is applied to the disc's surface. Due to this usage, the Water bottle will deplete, sooner than the allotted 500 minutes on the C-H Chip. For this reason the VMI Hybrid has been designed to notify the Operator to refill the Water Bottle. After 150 minutes of machine operation, the Main Screen on the User Keypad will display the "AW" message, indicating that water must be added to the Water Bottle. Once the Water

Bottle has been refilled, the Operator will need to press any button on the User Keypad, to inform the unit that the refill has been performed. At this point the "AW" message will disappear. Upon completion, the machine will reset back to the Main Function Mode, and the User can now continue with operation.

WARNING: FAILURE TO REFILL THE WATER BOTTLE WILL RESULT IN DAMAGE TO THE DISCS AND TO THE MACHINE!



Change Buffing Solution & Center Hub

During every cycle, Buffing Solution is applied to the disc's surface. Due to this usage, the Buffing Solution bottle will deplete, sooner than the allotted 500 minutes on the C-H Chip. For this reason the VMI Hybrid has been designed to notify the Operator to refill/replace the Buffing Solution Bottle. After 250 minutes of machine operation, the Main Screen on the User Keypad will display the "CC" message,

indicating that Buffing Solution must be added to the Buffing Solution Bottle. Once the Buffing Solution Bottle has been refilled, the Operator will need to press any button on the User Keypad, to inform the unit that the refill has been performed. At this point the "CC" message will disappear. Upon completion, the machine will reset back to the Main Function Mode, and the User can now continue with operation.

WARNING: FAILURE TO REFILL THE BUFFING SOLUTION BOTTLE WILL RESULT IN INFERIOR REPAIR QUALITY, AND IN SOME EXTREME CONDITIONS CAUSE DAMAGE TO THE DISC AND TO THE MACHINE!



Over time the Center Hub will wear down and as a result the hub will lose its effectiveness. To protect the inside diameter of the disc, from collecting any residue during the repair process, the Center Hub must be replaced. The Center Hub should always be replaced at the same time as the Buffing Solution.



Replace Buffing Pads

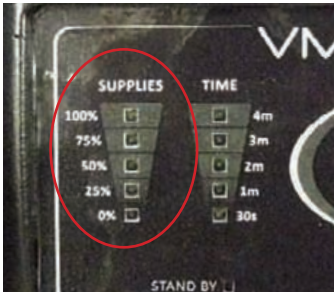
Over time, the buffing pads will wear down. Each set of Buffing Pads, is rated for 84 minutes of operation. It will take six sets of Buffing Pads to equal the 500 minute rating on the C-H Chip. *Note: Buffing pads used past the rated life expectancy will affect the repair quality of the discs and in some extreme circumstances may cause damage to the discs themselves.* For this reason the VMI Hybrid has been designed to notify the Operator to replace

the Buffing Pads. After 84 minutes of machine operation, the Main Screen on the User Keypad will display the "CP" message indicating that the Buffing Pads must be replaced. Once the new Buffing Pads have been installed, the Operator will need to press any button on the User Keypad, to inform the unit that the replacing has been performed. At this point the "CP" error message will disappear. Upon completion, the machine will reset back to the Main Function Mode, and the User can now continue with operation.

WARNING: FAILURE TO REPLACE THE BUFFING PADS WILL RESULT IN INFERIOR REPAIR QUALITY AND MAY CAUSE DAMAGE TO THE OPTICAL MEDIA!

Replace All Consumables

The C-H Chip has been designed to monitor the consumables used within your VMI Hybrid to ensure that each disc is repaired to the same standard and to decrease any downtime that may result from not having replacement consumables on hand. The



consumables originally provided with the VMI Hybrid and the VMI Hybrid Combo Packs are all rated for 500 minutes of operation. Each configuration is accompanied by the C-H Chip, which informs the unit that the consumables have been replaced, and installed. The amount of consumable usage time is displayed on the “Supplies – Fuel Gauge” located on the User Keypad. As the consumables deplete over time, the fuel gauge will expire down in percentage as follows:

100% = 500-376 minutes
 75% = 375-251 minutes
 50% = 250-126 minutes
 25% = 125-1 minutes
 0% = 0 minutes

Once the consumable level has reached 25%, the Green LED will switch over to Yellow and the 0% Green LED will turn over to Red and will blink every two seconds. At this point the Operator should make plans to obtain more consumables. Once the C-H Chip has reached 0%, the flashing Red LED will stop and a solid Red LED will appear. At this point the “RC” error message will appear on the Main Screen. The machine will not allow for any other operations, until a new C-H Chip is installed. To replace the C-H Chip:

1. Turn OFF power to the unit.
2. Open the Back Cover by pulling down.
This will expose the Buffing Solution and Water Bottles.
3. Locate the C-H Chip located between the two bottles.
4. Remove the empty C-H Chip.
5. Install a new C-H Chip.
6. In order for the reset to take place, you must turn ON power to the unit.

Once a new C-H Chip has been installed, the “RC” error message on the Main Screen will disappear and the “Supplies – Fuel Gauge” will display 100%. The User can now resume operation.



Error Messages:

- E1: Top Cover open switch is not deactivated.
- E2: Main Motor is not achieving enough current.
- E3: Main Motor is achieving too much current.
- E4: Buffing Solution Pump is not working.
- E5: Water Pump is not working.
- ER: Emergency Stop
- C3: Clean Catch Tray
- AW: Add Water
- CC: Replace Buffing Solution & Center Hub
- CP: Replace Buffing Pads
- RC: Replace All Consumables

QUICK START - How to Use Your Machine

1. Turn ON power to the unit by pressing the ON/OFF switch to the ON position, located in the rear of the unit. The Top Cover will open automatically after a few seconds.



2. Select which type of disc you would like to repair, by selecting either the Regular or Blu-Ray option, located on the User Keypad.



3. Select the amount of time that you would like to repair your disc for, depending on the severity of damage. To do this, press either the Regular or the Blu-Ray button (depending on what option you chose in step # 2) until the LED next to the desired amount of time, is illuminated.



FAILURE TO USE CONSUMABLES DESIGNED FOR THIS UNIT WILL CAUSE DAMAGE TO BOTH UNIT AND DISC THEREBY VOIDING YOUR WARRANTY. FOR AUTHORIZED DISTRIBUTORS VISIT WWW.VENMILL.COM.



4. Place the DVD/CD/Blu-Ray onto the platter, with LABEL SIDE OF DISC FACING DOWN!



5. Close the Top Cover and the cycle will start automatically.



6. Once the cycle has completed, the Top Cover will open automatically. Remove your disc.

FAILURE TO USE CONSUMABLES DESIGNED FOR THIS UNIT WILL CAUSE DAMAGE TO BOTH UNIT AND DISC THEREBY VOIDING YOUR WARRANTY. FOR AUTHORIZED DISTRIBUTORS VISIT WWW.VENMILL.COM.

Standard Maintenance

How to clean the Catch Tray

(This tray must be cleaned out after every 50 minutes of machine use!)

1. Pull off Platen from Main Motor shaft.
2. Locate the Removable Catch Tray.
3. Pull up on the outer edges of the tray.
4. Remove tray from machine.
5. Rinse under warm water. Wipe away any build up of Buffing Solution with a wet paper towel, napkin, or by hand.
6. Clean tray until all visible signs of build up are removed.
7. Make sure that the Removable Catch Tray is clean and dry, before reinstalling into the machine.
8. Install the Removable Catch Tray.
9. Reinstall the Platen onto the Main Motor shaft.
10. Press any button on the User Keypad.
11. Resume normal operation.



What to do when the Hybrid will not be used for an extended period of time:

1. Make sure to keep the "Top Cover" in the Open position. This will ensure that the Buffing Pads will not become flat.
2. Install the two Nozzle Plugs, which have been sent with your unit, to the tips of the Buffing Solution nozzles. This will ensure that the buffing Solution within the tubes will not cure.

Replacing Consumables:

A. How to replace the Buffing Pads.

(The machine will notify the Operator to replace the Buffing Pads by displaying the "CP" message.)

1. Make sure the Top Cover is in the "Open" position.
2. Locate the Buffing Pads.
3. Pull back gently with your finger on any outside edge of the Buffing Pad. Pull the Buffing Pad away from the Buffing Pad Holder, until the pad is completely detached.
4. Repeat step # 3 for the second Buffing Pad.
5. Each Buffing Pad has been marked on the back side with an "L" or an "R", to indicate which Buffing Pad should go on which Buffing Pad Holder. NOTE: THE "R" (RIGHT) BUFFING PAD IS LARGER IN SIZE THAN THE "L" (LEFT) BUFFING PAD. Take your new Buffing Pad and line it up with the corresponding Buffing Pad Holder. It is essential that the Buffing Pad is CENTERED on the Buffing Pad Holder. Make sure that the new Buffing Pad is fully seated on the Buffing Pad Holder by pressing gently on the entire surface of the pad.
6. Repeat step # 5 for the second Buffing Pad.
7. If the Buffing Pads were replaced due to the "RC" error code, no further action is required with the Buffing Pads.
8. If the Buffing Pads were replaced due to the "CP" error code, press any button on the User Keypad to inform the machine that the pads were replaced.
9. Resume operation.

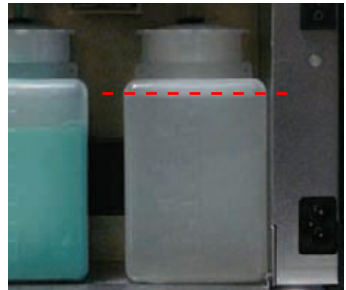


FAILURE TO USE CONSUMABLES DESIGNED FOR THIS UNIT WILL CAUSE DAMAGE TO BOTH UNIT AND DISC THEREBY VOIDING YOUR WARRANTY. FOR AUTHORIZED DISTRIBUTORS VISIT WWW.VENMILL.COM.

B. How to refill Water Bottle

(The machine will notify the Operator to replace the Water by displaying the “AW” message.)

1. Pull down on the Back Panel Door to expose both the Buffing Solution and Water Bottles.
2. Pull out the Water Bottle with your finger tips, until you can tip the bottom of the bottle, out towards yourself.
3. Wipe down the Water tubing with a paper towel to remove any excess water left on the tubing.
4. Fill the Water Bottle with any potable water.
5. Please fill the bottle as shown in the corresponding picture.
6. Once filled, proceed to feed the designated water tubing through the cap. CAUTION: MAKE SURE THE TUBING REACHES THE BOTTOM OF THE BOTTLE AND MAKE SURE NOT TO PINCH THE TUBING!
7. Now that the water has been replaced, proceed by closing the Back Panel Door.
8. Press any button on the User Keypad to notify the unit that the Water has been replaced.
9. Resume normal operation.



FAILURE TO USE CONSUMABLES DESIGNED FOR THIS UNIT WILL CAUSE DAMAGE TO BOTH UNIT AND DISC THEREBY VOIDING YOUR WARRANTY. FOR AUTHORIZED DISTRIBUTORS VISIT WWW.VENMILL.COM.



C. How to replace Buffing Solution Bottle

(The machine will notify the Operator to replace the Buffing Solution by displaying the "CC" message.)

1. Pull down on the Back Panel Door to expose both the Buffing Solution and Water Bottles.
2. Pull out the Buffing Solution bottle with your finger tips, until you can tip the bottom of the bottle, out towards yourself.
3. Wipe down the Buffing Solution tubing with a paper towel to remove any excess solution left on the tubing.
4. **WARNING: BEFORE INSTALLING THE NEW BOTTLE OF BUFFING SOLUTION IT IS ESSENTIAL TO SHAKE THE BUFFING SOLUTION BOTTLE WELL!** Once mixed, remove the safety seal from the bottle by unscrewing the bottle cap. Once the safety seal has been removed, reattach the bottle cap, and then proceed to feed the designated buffing solution tubing through the cap. **NOTE: ONLY ONE OF THE TWO BOTTLES OF BUFFING SOLUTION CONTAINS A CAP WITH AN OPENING FOR THE TUBING. THIS CAP MUST BE SAVED FOR REUSE!**

CAUTION: MAKE SURE THE TUBING REACHES THE BOTTOM OF THE BOTTLE AND MAKE SURE NOT TO PINCH THE TUBING!

NOTE: PLEASE KEEP THE SHIPPING CAP AND SAFETY SEAL! SHOULD THE

FAILURE TO USE CONSUMABLES DESIGNED FOR THIS UNIT WILL CAUSE DAMAGE TO BOTH UNIT AND DISC THEREBY VOIDING YOUR WARRANTY. FOR AUTHORIZED DISTRIBUTORS VISIT WWW.VENMILL.COM.

MACHINE NEED TO COME IN FOR SERVICING, THE BUFFING SOLUTION BOTTLE MUST BE REMOVED. TO ENSURE THAT THE COMPOUND DOES NOT CURE YOU WILL NEED TO MAKE SURE THAT THE BOTTLE IS SEALED AND CAPPED.

5. Now that the Buffing Solution has been replaced, proceed by closing the Back Panel Door.
6. Press any button on the User Keypad to notify the unit that the Buffing Solution has been replaced.
7. Resume normal operation.

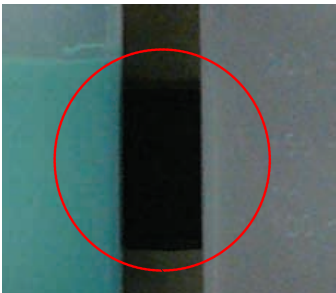


D. How to Replace the Center Hub (The Center Hub must be replaced at the same time as the Buffing Solution!)

1. Make sure the Top Cover is in the "Open" position.
2. Locate the Center Hub, positioned between the two Buffing Pad Holders.
3. Pull the worn Center Hub off the Hex shaped post with your Index Finger and Thumb.
4. Take the new Center Hub and line up the Hex shaped opening on the hub to the Hex shaped post.
5. Push the Center Hub in, as far as it can go.
6. Spin the Center Hub by hand to make sure the hub is centered.
7. If needed, make the proper adjustment.



8. If you are replacing the Center Hub before the Hybrid has indicated to do so, then there are no other steps that need to be performed.
9. If you are replacing the Center Hub due to the "CC" message, make sure to replace the Buffing Solution, and then press any button on the User Keypad to notify the unit that both the Buffing Solution and the Center Hub have been replaced.
10. Resume normal operation.



E. How to replace Consumable Counter Chip (C-H Chip)

(The machine will notify the Operator to replace the C-H Chip by displaying the "RC" message. All other consumables must be replaced at this time!)

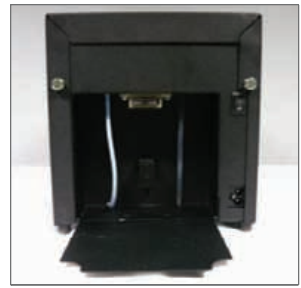
1. Pull down on the Back Panel Door to expose both the Buffing Solution and Water Bottles.
2. Locate the C-H Chip positioned between the Buffing Solution and Water Bottles.
3. Grab the C-H Chip with your Index Finger and Thumb, by pulling out towards yourself, and completely remove the depleted C-H Chip. Note: For easier access, remove either the Buffing Solution Bottle or the Water Bottle.
4. Install a new C-H Chip.
5. After replacing all the other consumables, proceed with normal operation.

REPACKING:

1. Remove the Buffing Pads and the Center Hub from the inside of the VMI Hybrid.
2. Remove the Water and the Buffing Solution Bottles from the inside of the VMI Hybrid.
3. Wipe any excess Buffing Solution and/or Water, from the corresponding tubes, with a paper towel
4. Drain both the Water and the Buffing Solution tubing.



Note: For the Buffing Solution line, fill the Water Bottle with hot water. Place the Buffing Solution tubing into the hot water. Press the "C" button on the front User Keypad. Make sure to have a small container ready to catch the draining Buffing Solution. Wait until all the Buffing Solution is drained from the tubing. You will know when this happens, since water will come out of the nozzles. Press the "C" button on the front User Keypad to stop the drainage. Remove the Buffing Solution tubing from the warm water. Press the "C" button on the front User Keypad to drain out the remaining water from the Buffing Solution tubing. Once the water is removed from the tubing, press the "C" button on the User Keypad to stop the drainage.



For the Water line, press the "W" button on the front User Keypad. Have a small container ready to catch the draining water. Once all the water has been drained, press the "W" on the front User Keypad to stop the drainage.



FAILURE TO USE CONSUMABLES DESIGNED FOR THIS UNIT WILL CAUSE DAMAGE TO BOTH UNIT AND DISC THEREBY VOIDING YOUR WARRANTY. FOR AUTHORIZED DISTRIBUTORS VISIT WWW.VENMILL.COM.

WARNING: FAILURE TO REMOVE CONSUMABLES AND FAILURE TO DRAIN THE LINES FOR SHIPPING WILL RESULT IN POTENTIAL DAMAGE TO YOUR VMI HYBRID!

5. Turn off power to the machine.
6. Close the Top Cover.
7. Remove power cord.
8. Place VMI Hybrid into protective plastic bag.
9. Place bottom KorrVu holder into the Inner Shipping Box.
10. Place VMI Hybrid into the Inner Shipping Box, on top of the bottom KorrVu holder. **MAKE SURE THE VMI HYBRID IS PLACED ON ITS SIDE!** Slightly push down on the VMI Hybrid
11. Place top KorrVu holder on top of the VMI Hybrid and slightly push down on the top KorrVu holder.
12. Insert anything else that has been required by the Technical Support Department.
13. Close and tape the Inner Shipping Box.
14. Place Inner Shipping Box into the Outer Shipping Box.
15. Close and tape the Outer Shipping Box.
16. Write provided RMA number on the outside of the Shipping Box.



Note: In order to send a machine in for servicing, a customer must call Technical Support first (866-864-0210) to troubleshoot the unit. If an authorized technician deems that the machine is in need of servicing, they will provide the customer with an RMA form to fill out. Any machine sent in without authorization may be denied delivery and will be returned to the customer at their expense.

For further assistance with questions not included please refer to our website, www.venmill.com.

1. Why do I have to keep the Top Cover in the open position when my VMI Hybrid is not in use?

Leaving the Top Cover in the closed position for a prolonged period of time, without running the machine, will cause the Buffing Pads to become flat. When this happens the Buffing Pads will not be able to repair the discs properly. If you would like to keep the Top Cover closed, when the machine is not in use, remove the Buffing Pads from the Buffing Pad Holders and then close the Top Cover.

2. Can I repair a 3 inch disc?

No!

3. Can I repair a Blu-ray disc?

Yes!

4. Can I repair a Double-Sided disc?

Yes!

5. Can I repair a disc that is warped or cracked?

No!

6. How long will a bottle of Buffing Solution last?

If used properly, one bottle of Buffing Solution will last 250 minutes of machine operation. You may order consumables through VenMill directly at www.venmill.com, or through one of our current distributors located on our website under the Distributors' tab. If you have any questions, please contact us at 800-928-0090 / 866-864-0210 Intl. or email Sales@venmill.com.

7. How long will a set of Buffing Pads last?

If used properly, one set of Buffing Pads will last 84 minutes of machine operation. You may order consumables through VenMill directly at www.venmill.com, or through our current distributors located on our website under the Distributors' tab. If you have any questions, please contact us at 800-928-0090 / 866-864-0210 Intl. or email Sales@venmill.com.

8. When should I replace my Platen Pad?

There is no set life expectancy for the Platen Pad. If you notice any imperfections, such as rips, tears, nicks, gouges, worn spots, and/or missing material – then the Platen Pad must be replaced. You may order consumables through VenMill directly at www.venmill.com, or through one of our current distributors located on our website under the Distributors' tab. If you have any questions, please contact us at 800-928-0090 / 866-864-0210 Intl. or email Sales@venmill.com.

9. Can I run my VMI Hybrid over 500 minutes without replacing the C-H Chip?

No! Once the C-H Chip is depleted the unit will not allow for any more cycles to be run. Once a new C-H Chip has been installed, the machine will continue with normal operation.

10. Why do I have to remove the Water and the Buffing Solution Bottles from the machine for shipping?

Since VenMill Industries cannot control how your VMI Hybrid is handled when in transit, we ask that you remove these bottles to ensure that no water or Buffing Solution is leaked into the machine during the shipping process, which could cause damage to the unit.

11. What can I do if there is leftover Buffing Solution on my Blu-ray disc?

Each machine has been supplied with a free gift, a Cleaning Kit. This Kit is intended to be used with your discs. Because of the nature of Blu-ray discs, there may at times be left over Buffing Solution on the disc when coming out of the VMI Hybrid. Spray the disc with the Cleaning Solution and then wipe it dry with the provided micro fiber cloth. This will remove the left over residue and will render your discs with a mirror finish.

Disconnect unit from supply circuit before opening
Déconnecter du circuit d'alimentation avant d'ouvrir

WARNING AND CAUTIONS

You are cautioned that any changes or modifications not expressly approved in this manual could void your warranty.

Operating room temperature is 72°F(22°C) +/- 12°F(7°C)

To prevent fire or shock hazard, do not expose the unit to rain or moisture.

If you have any questions about this product, you may call VenMill Industries Customer Service at 800.928.0090 USA, or 866.864.0210 N.Ameri.

Special Feature: Emergency Quick Release

If at any time you need to manually release the top cover, you can use any object such as a pencil or pen to release the latch to the door.



Safety features:

- Removeable power cord
- ON/OFF switch
- Process controlled to prevent operation when top cover is the opened position
- Fan operates when the unit is running
- Emergency stop with any buttons or opening of the top cover

SPECIFICATIONS

Unit operates on 24 Volt DC Power and maximum of 4 Amps

- Weight: 15lbs
- Dimension: 10.9"L x 8.42"W x 8.5"H
- Power: Safe DC Power
- Part Number: PNV7000
- Supplies used with unit: Buffing pads, Buffing Solution, Center Hub, and Platen Pad
- Warranty: 1 Year Limited
- Process: Hydro Optic Polishing

FOR SUPPORT INFORMATION

www.venmill.com

or

508-278-0091

866-864-0210 TOLL FREE

FOR NON-NORTH AMERICAN SERVICE
PLEASE CALL YOUR REGIONAL DISTRIBUTOR

If you are not sure who your regional distributor
is please contact sales@venmill.com

MAILING ADDRESS:

VenMill Industries, Inc.
670 Douglas Street
Uxbridge, MA 01569-2001

RE-ORDER INFORMATION FOR (ONLY FOR THE NORTH AMERICA)
CONSUMABLES USED WITH THE VMI HYBRID

Hybrid Combo Pack..... **PN7001**
(6 sets of Pads, 2 Bottles of Buffing Solution, 2 Center Hubs, 2 jet nozzle caps, and 1 C-H Chip)

Hybrid Platen Assembly **PN7015**